



MATTHEW JAMES
Property Services



7 Ivens Grove

, Coventry, CV2 2QH

Fixed Asking Price £150,000



7 Ivens Grove

, Coventry, CV2 2QH

Fixed Asking Price £150,000



GROUND FLOOR

Lounge

15'1" x 9'3" (4.62 x 2.84)

Kitchen / Diner

12'7" x 7'8" (3.84 x 2.36)

Bedroom One

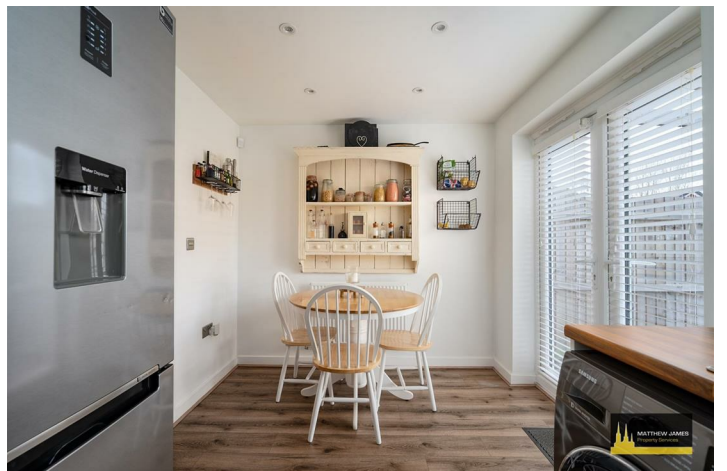
12'7" x 8'5" (3.84 x 2.59)

Bedroom Two

12'7" x 8'2" (3.84 x 2.49)

Family Bathroom

6'3" x 5'7" (1.91 x 1.72)



Road Map



Hybrid Map



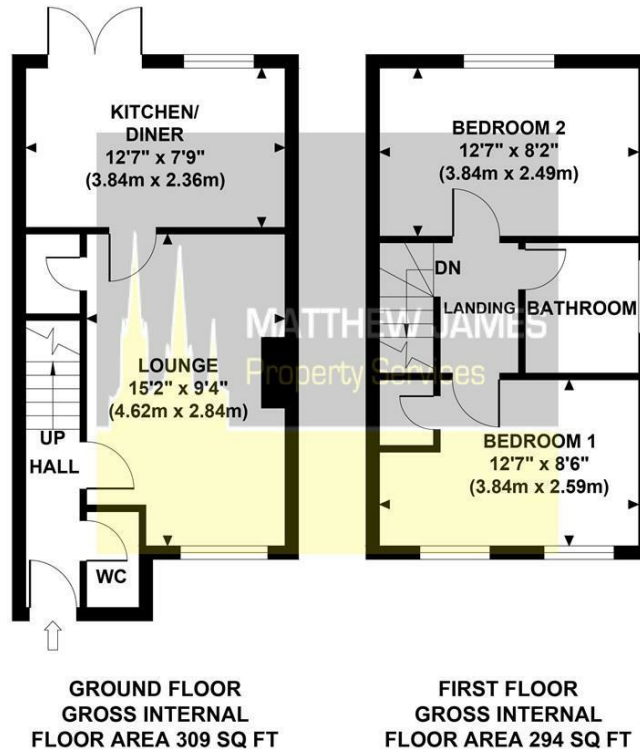
Terrain Map



Floor Plan

IVENS GROVE

Approximate Gross Internal Area
603 sq ft / 56.0 sq m

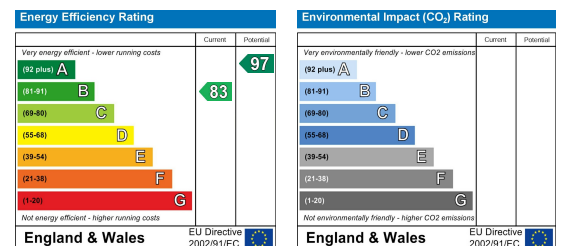


Although every attempt has been made to ensure accuracy, all measurements are approximate and no responsibility is taken for any error, omission, or mid-statement. This floor plan is for illustrative purposes only and not to scale. Measured in accordance to RICS standards.

Viewing

Please contact us on 02477 170170 if you wish to arrange a viewing appointment for this property or require further information.

Energy Efficiency Graph



These particulars, whilst believed to be accurate are set out as a general outline only for guidance and do not constitute any part of an offer or contract. Intending purchasers should not rely on them as statements of representation of fact, but must satisfy themselves by inspection or otherwise as to their accuracy. No person in this firm's employment has the authority to make or give any representation or warranty in respect of the property.

CONTACT INFORMATION

24a Warwick Row, Coventry CV1 1EY

02477 170170

info@matthewjames.uk.com

www.matthewjames.uk.com

Facebook

Twitter